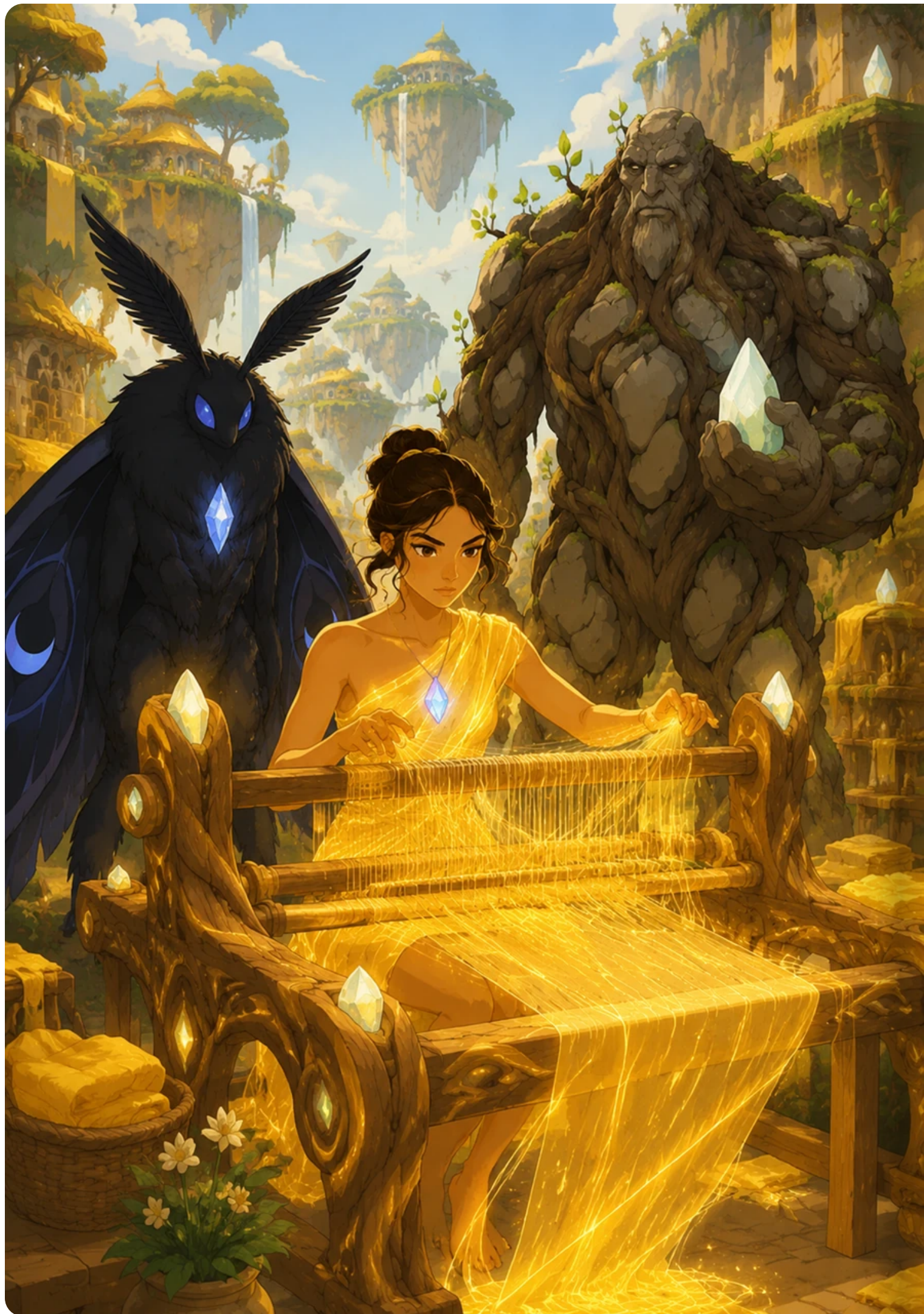




The Weaver of Sunbeams and the Midnight Moth

Gabriel Delgado Flores



In a vibrant village perched atop floating islands, Elara sat at her loom, her fingers dancing. She spun threads of pure sunshine into shimmering fabrics, her magic bringing light and warmth to her people. Her loom was carved from ancient, sparkling wood, humming with energy.



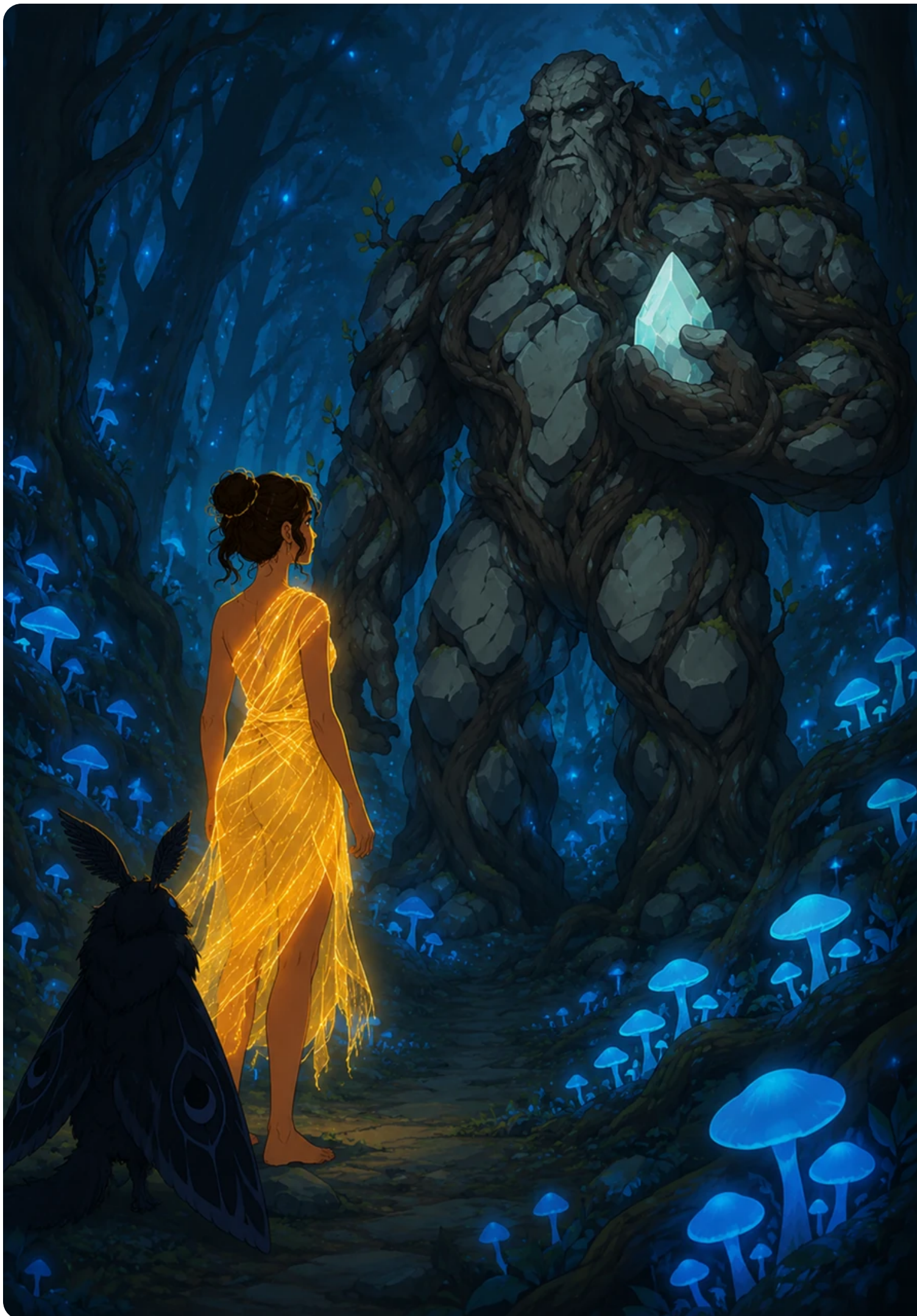
But a shadow was growing. High above, a massive, obsidian moth began to unfurl its wings, blotting out the sun. The village plunged into a sudden, cool twilight, and a wave of unease spread.



This moth was the Moonshade, a legendary creature drawn to the warmth Elara created, consuming it to fuel its own dark beauty. With every beat of its velvet wings, more sunlight vanished.



Elara, determined to save her village, took her most precious spindle. She set out across the aerial pathways, navigating treacherous obsidian bridges that crumbled into the swirling clouds below.



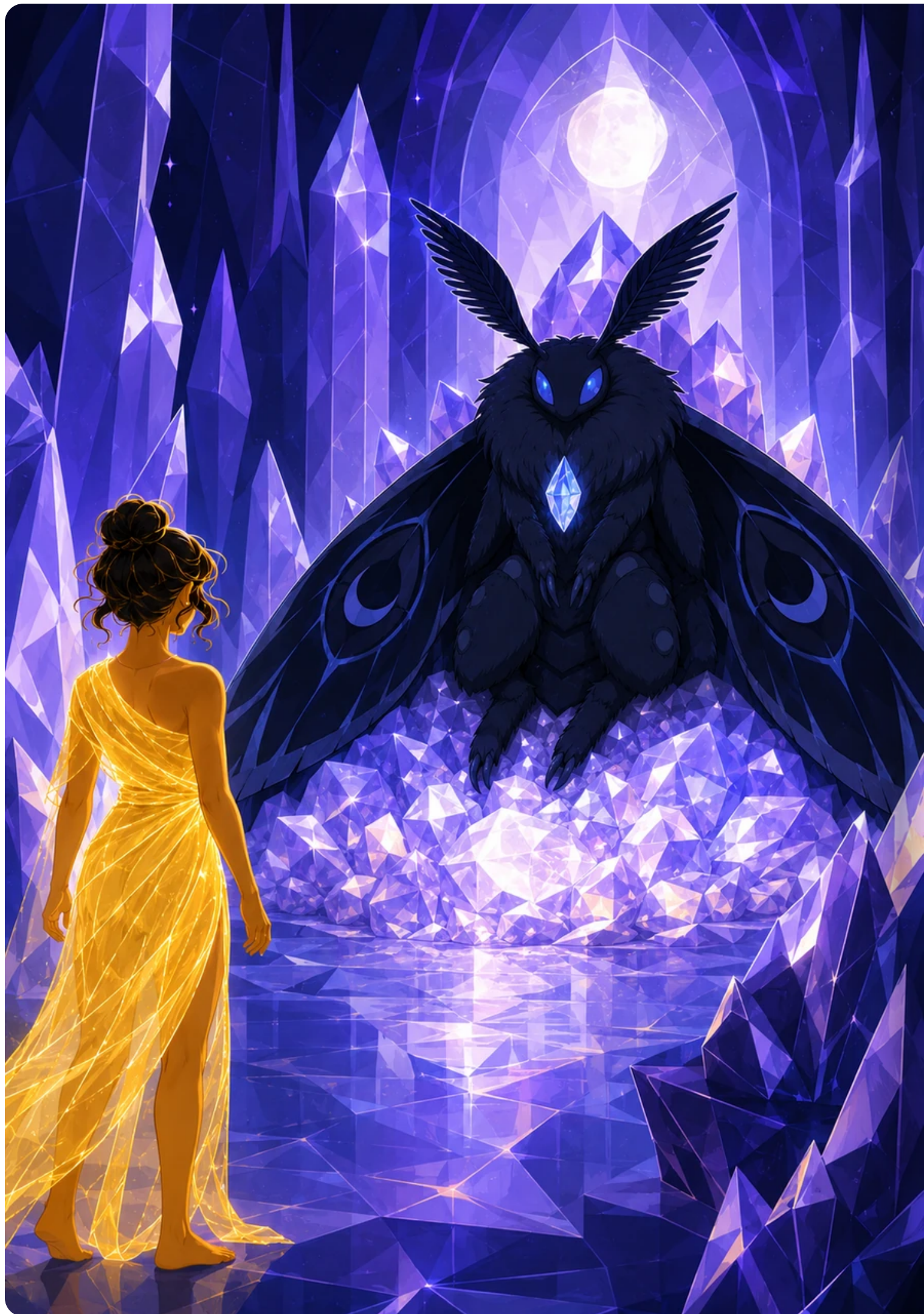
Her journey led her to the Whispering Woods, where the air was thick with glowing blue fungi and whispering winds. Here, she encountered the ancient Grovekeeper, a creature made of living root and stone, who guarded the path ahead.



The Grovekeeper tested Elara's resolve, asking why she sought the Moonshade. Elara spoke of her village's plight, not realizing that the Moonshade was not truly evil, only driven by its nature to seek the light she created.



Impressed by her spirit, the Grovekeeper gifted her a small, pulsing moonstone shard, warning her that balance, not destruction, was the key. With the shard, she continued upward.



ly, Elara reached the Moonshade's lair, a sprawling, crystalline palace reflecting the captured moonlight. The moth was nestled on a bed of raw diamonds, its wings still drinking in the stolen warmth.



Instead of attacking, Elara unfurled her golden cloth, weaving the sunbeams directly into the air. The Moonshade, mesmerized, approached. Elara then offered the moonstone shard, which resonated with the moth's own nature.



The Moonshade landed softly, placing the shard against its chest. A surge of soft blue light filled the palace, stabilizing the consumed sunlight. The darkness receded, leaving a beautiful, tempered eclipse that allowed both light and shadow to exist in harmony.