



# The Guardian of the Salt Mountain

Atul kumar Arya



Sam stands in the vast, echoing salt warehouse, his breath misting in the cold air as he pats a massive mountain of white crystals. He knows there is enough to cover eighty inches of snowfall, a precious reserve for the long winter ahead.



Outside, the first delicate flakes begin to drift from a leaden sky, dusting the orange snowplows lined up like sleeping giants. Sam checks his clipboard, noting the average daily dusting of an inch and a half that the town usually receives.



As the days pass, the rhythm of the highway department becomes a steady heartbeat against the winter chill. Sam watches the weather stations, knowing that while some days are clear, the small variations in snow are what keep him calculating late into the night.



In the warm glow of the maintenance shed, Sam shows a young trainee how to track the standard deviation of the snowfall. He explains that even though the snow varies by just a fraction of an inch, those tiny differences add up over the long journey of fifty days.



A week of steady, predictable snow blankets the valley in a peaceful white silence. The trucks hum along the roads, spreading the salt precisely where it's needed, keeping the mountain passes open for the townspeople.



Sam stares at a large map of the county, visualizing the fifty-day horizon as a statistical challenge. He calculates that the odds are heavily in their favor, with a nearly ninety-nine percent chance that their salt mountain will last.



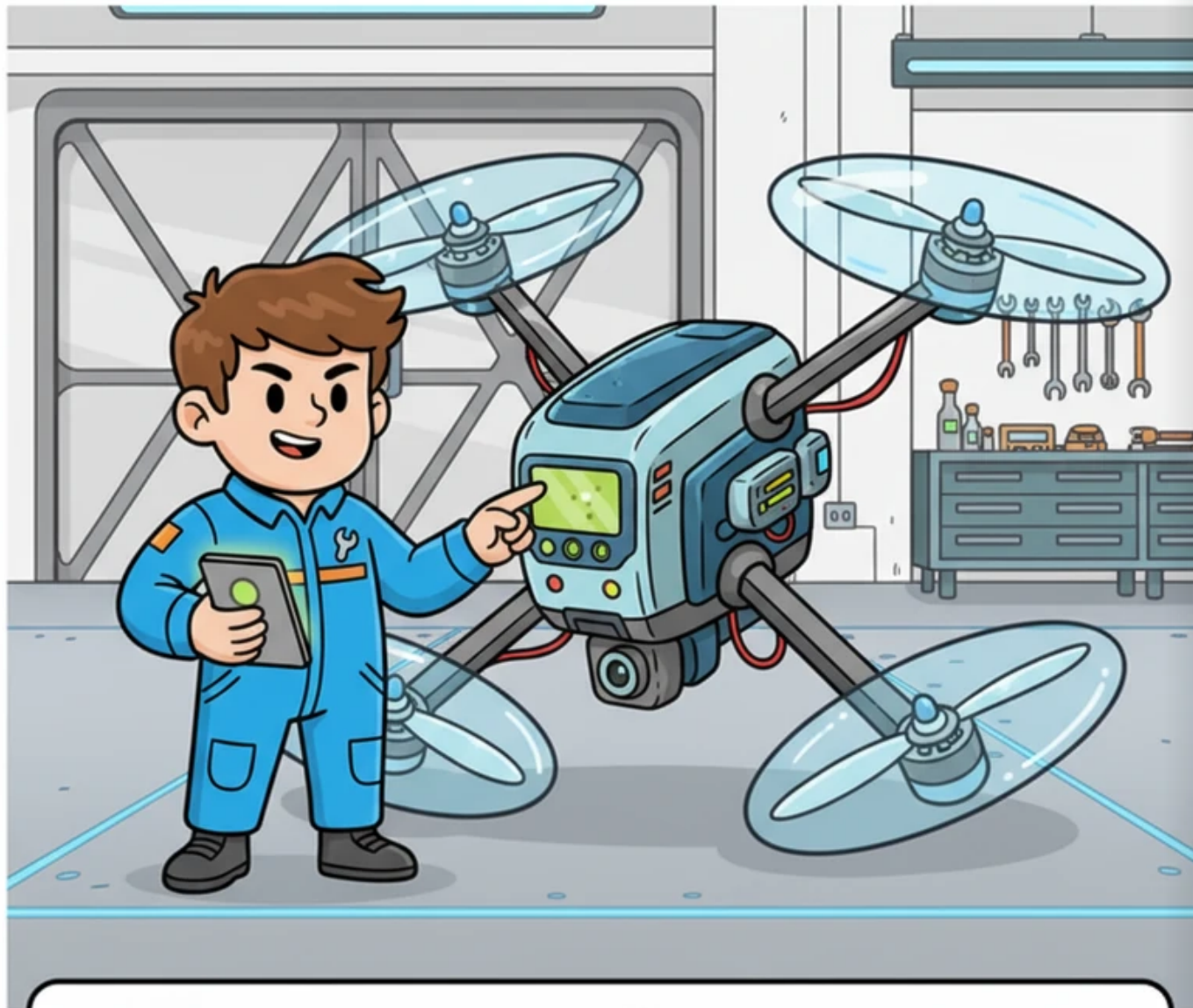
Mid-winter arrives with a sudden, heavy blizzard that tests Sam's assumptions about the independence of each day's weather. He realizes that nature often follows patterns, where one snowy day often invites another, defying simple averages.



The salt pile in the warehouse begins to shrink, revealing the dark floor beneath as the trucks work overtime. Sam monitors the eighty-inch line painted on the wall, watching his mathematical predictions meet the reality of the freezing wind.



On the fiftieth day, a light flurry dances across the cleared pavement, the very last of the predicted snow cycle. Sam checks his final measurements and finds that his preparation and the laws of probability have kept the roads clear and the town safe.



**TRAINEE SAM'S PROTOTYPE FLIGHT READY**

As the first hints of spring melt the remaining drifts into trickling streams, Sam stands proudly before his empty warehouse. The winter was long and the math was complex, but the community flourished because a plan was made and the salt held true.