



Ripply's Grand River Adventure

Samantha Barton



Ripply the water drop awakens as a tiny, sparkling spring high up in the jagged mountains. The air is crisp and cool, and ancient moss-covered rocks cradle the very first trickles of water. Ripply feels a gentle pull, a whisper from the world below, urging a grand adventure to begin.



Soon, Ripply joins other little drops, forming a lively stream that tumbles down the steep, rocky slopes. They race through a narrow, V-shaped valley, splashing over smooth pebbles and around sturdy tree roots. The journey is exhilarating, a thrilling downhill dash towards the unknown.



As Ripply flows further, the stream widens, meeting another bustling stream that rushes in from the side. This is a confluence, where two waterways merge, making Ripply feel bigger and stronger. The combined water now forms a gushing river, eager to carve its path through the land.



The land starts to flatten out slightly, and Ripply notices the river is no longer just straight. It begins to curve and sway, creating graceful bends called meanders, like a playful snake slithering across the landscape. The river's powerful flow gently erodes the outer banks, shaping its winding course.



With each twist and turn, Ripply helps carry tiny bits of sand and soil, sculpting the riverbanks. Where the water slows on the inner bends, these sediments are deposited, building up new land. This constant movement of erosion and deposition makes the river a busy artist, always reshaping its own path.



Over time, one of Ripply's meanders grows into a dramatic, almost complete loop, like a giant watery hug. Sometimes, during big floods, the river might even cut a new, straighter path, leaving the old loop behind to become a peaceful oxbow lake. Ripply marvels at the river's ever-changing artwork.



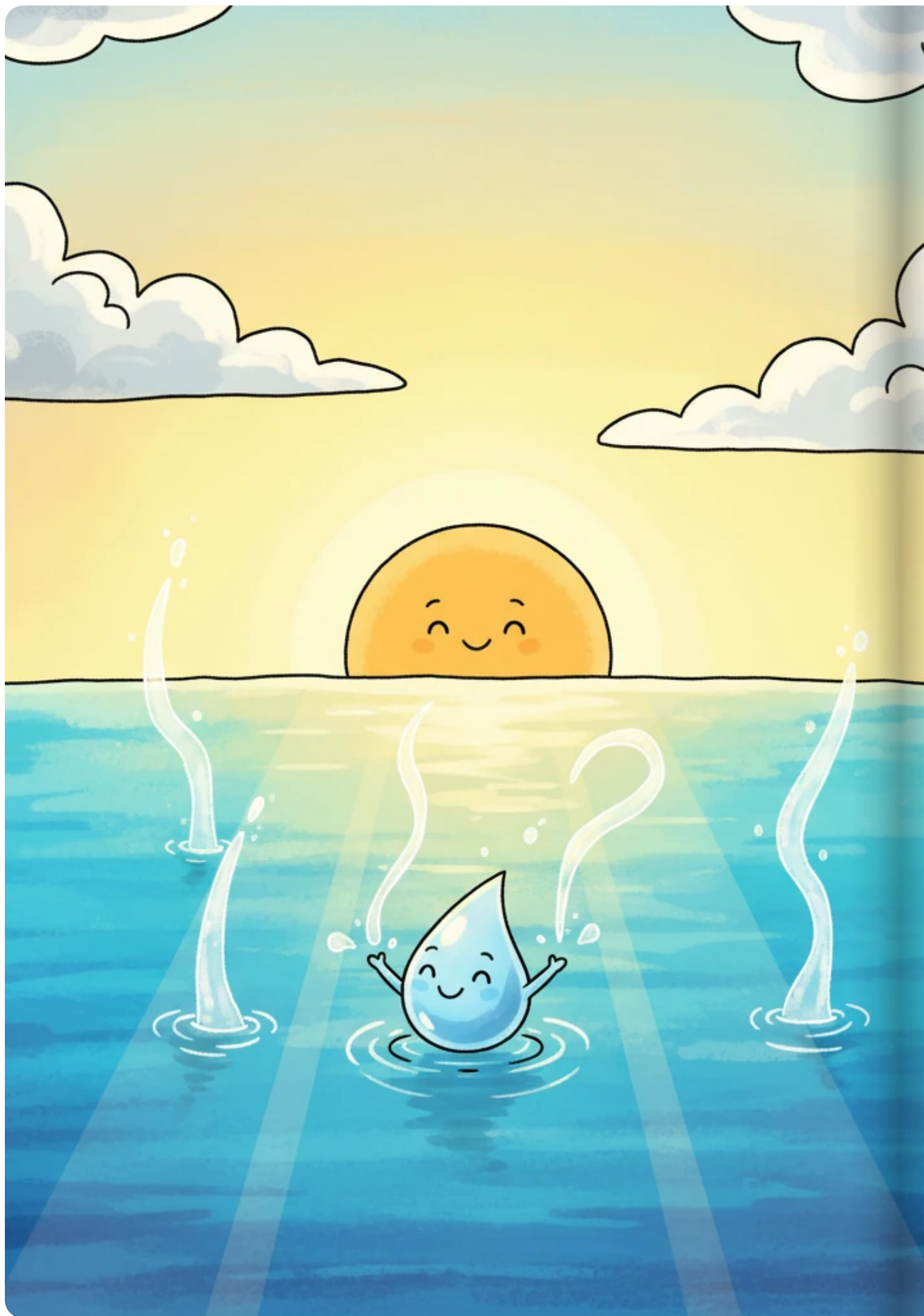
Now, Ripply flows across a broad, flat valley, known as a floodplain, where the river spreads out during heavy rains. The water moves more slowly here, depositing rich soil that makes the land wonderfully fertile for plants and animals. Sunlight glints off the wide expanse, reflecting the sky above.



The river's journey nears its end as Ripply feels a new, salty scent in the air. The river widens dramatically, mixing with the incoming tides from the sea, forming an estuary. This special place is a bustling home for unique creatures that thrive in both fresh and saltwater.



Finally, with a grand flourish, Ripply flows out of the river's mouth and into the boundless, shimmering ocean. The once tiny drop is now part of an immense, blue expanse, feeling both small and incredibly connected to everything. This is the magnificent end of the river's long, adventurous journey.



As Ripply drifts in the vast ocean, the warm sun begins to gently lift the water upwards, turning it into invisible vapor. Ripply knows that soon, the journey will begin anew, rising into the clouds to become rain once more. It's a never-ending cycle, a grand adventure always waiting to restart.