

THE MYSTERIOUS MANUSCRIPT



The Divine Blueprint: A Journey
Through Embryology

Munib

UMAR
- PROFESSIONAL RESEARCHER



Omar, a dedicated researcher, stands in a light-filled laboratory where ancient manuscripts meet cutting-edge technology. He begins his investigation into the origins of human life, bridging the gap between centuries of wisdom and modern scientific discovery.



Looking through a powerful lens, Omar observes the Nutfa, the mingled drop described in Surah Al-Insan. He reflects on how this fusion of sperm and ovum was only understood by science in the 17th century after the invention of the microscope.



The journey continues to the Alaq stage, where the embryo begins to cling to the uterine wall. Omar marvels at the precision of the term, which describes something that hangs or is suspended, much like a tiny explorer finding its first home.



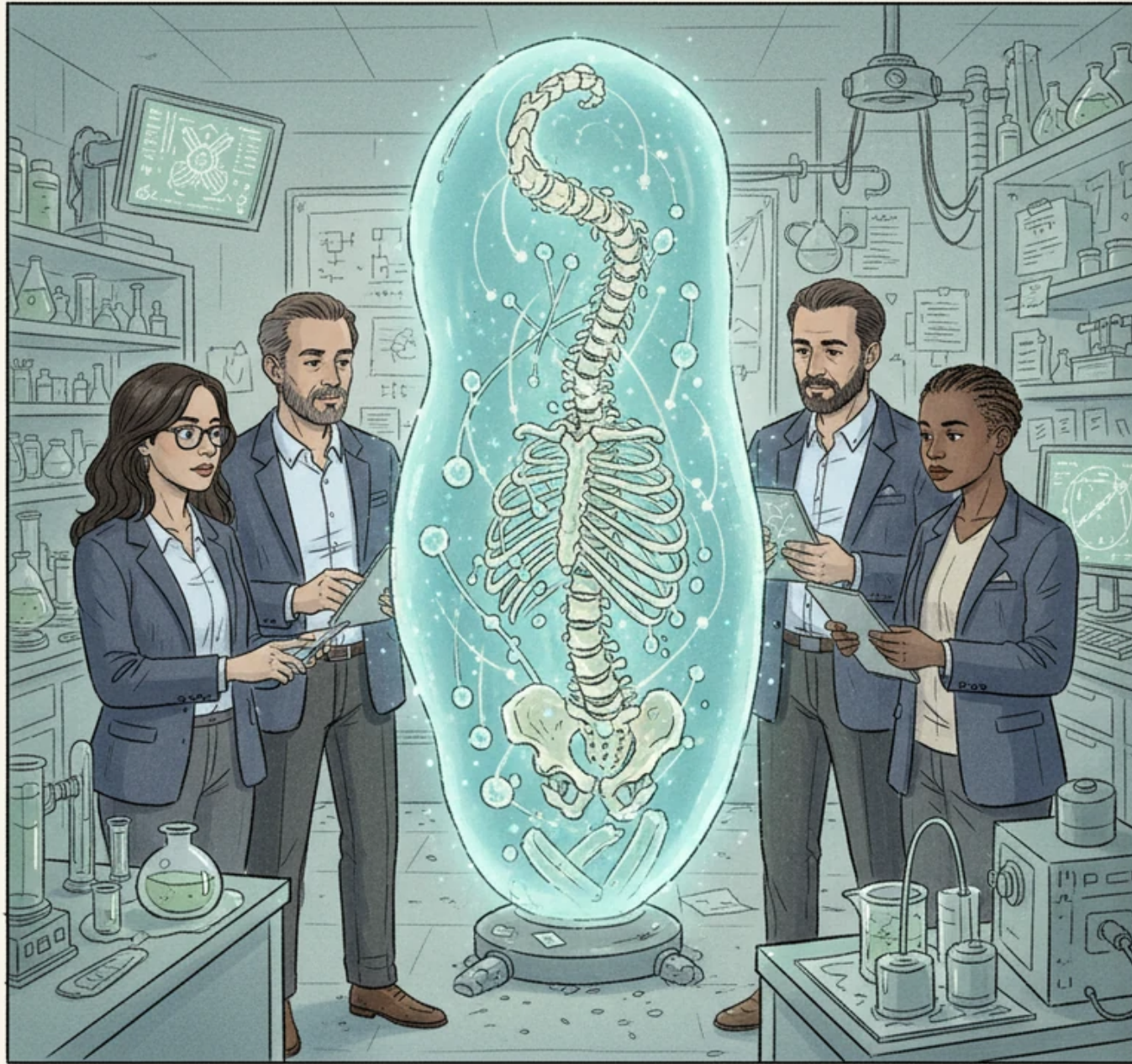
Omar compares the embryo's physical form to a leech, noting the striking similarity in appearance and function. This leech-like stage, mentioned in the Quran, aligns perfectly with the way the embryo draws nourishment from its mother.



As the embryo transforms into the Mudghah, it takes on the appearance of a chewed substance. Omar examines the somites, the small segments that look like teeth marks, which will eventually become the foundation of the spine.

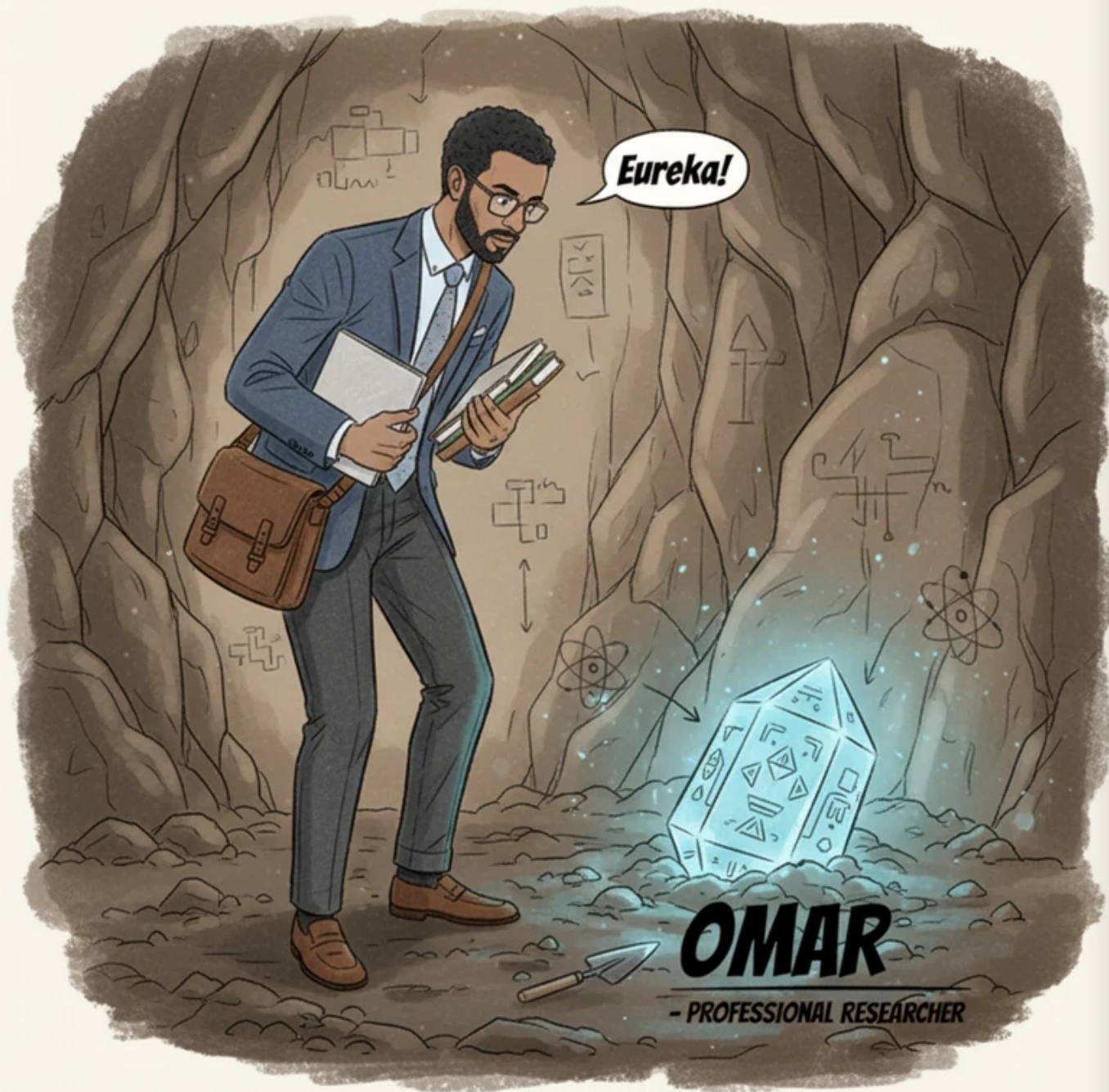


The scientific discovery of somites provides a clear explanation for the Quranic description in Surah Al-Mu'minun. Omar sketches the embryo, noting how the irregular surface resembles a piece of gum that has been bitten.



SCENE VII: THE IZ FORMATION

The story moves to the formation of Izam, or bones, which develop as a distinct framework within the growing life. Modern embryology confirms that the skeletal system begins its formation before the surrounding muscles are fully integrated.



Omar observes the next phase where the bones are clothed with Lahm, or flesh and muscle. This specific chronological sequence, recorded in the 7th century, was only verified by advanced medical science in the 19th and 20th centuries.



Deep within the protective womb, Omar identifies the Three Veils of Darkness mentioned in Surah Az-Zumar. He maps out the abdominal wall, the uterine wall, and the amniotic membrane, three distinct layers that shield the developing child.



OMAR
- THE DISCOVERER





Having completed his study, Omar closes his journal with a profound sense of enlightenment and awe. The harmony between the ancient verses and modern biological facts reveals a timeless blueprint of human creation.