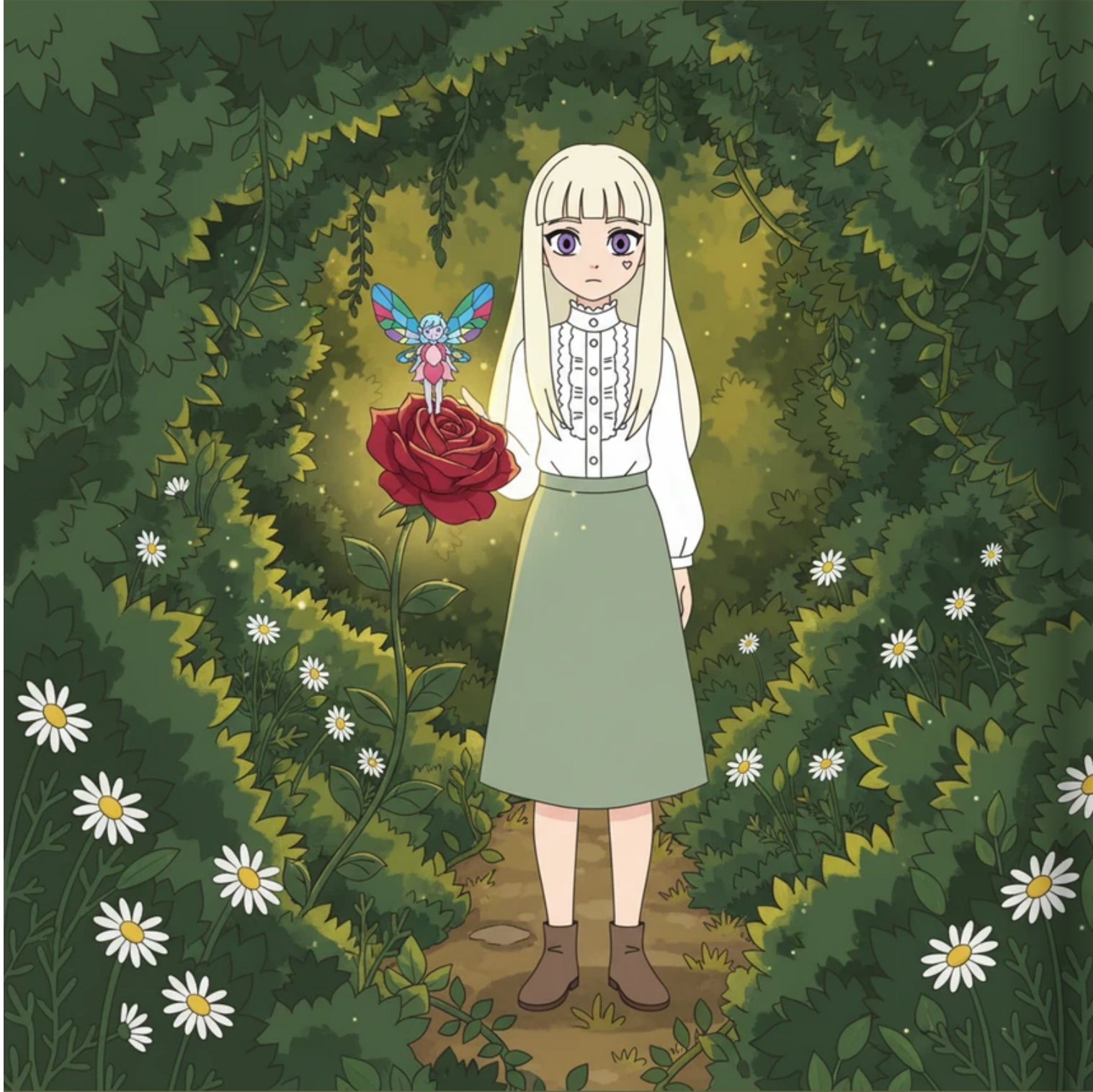


ROSALIND

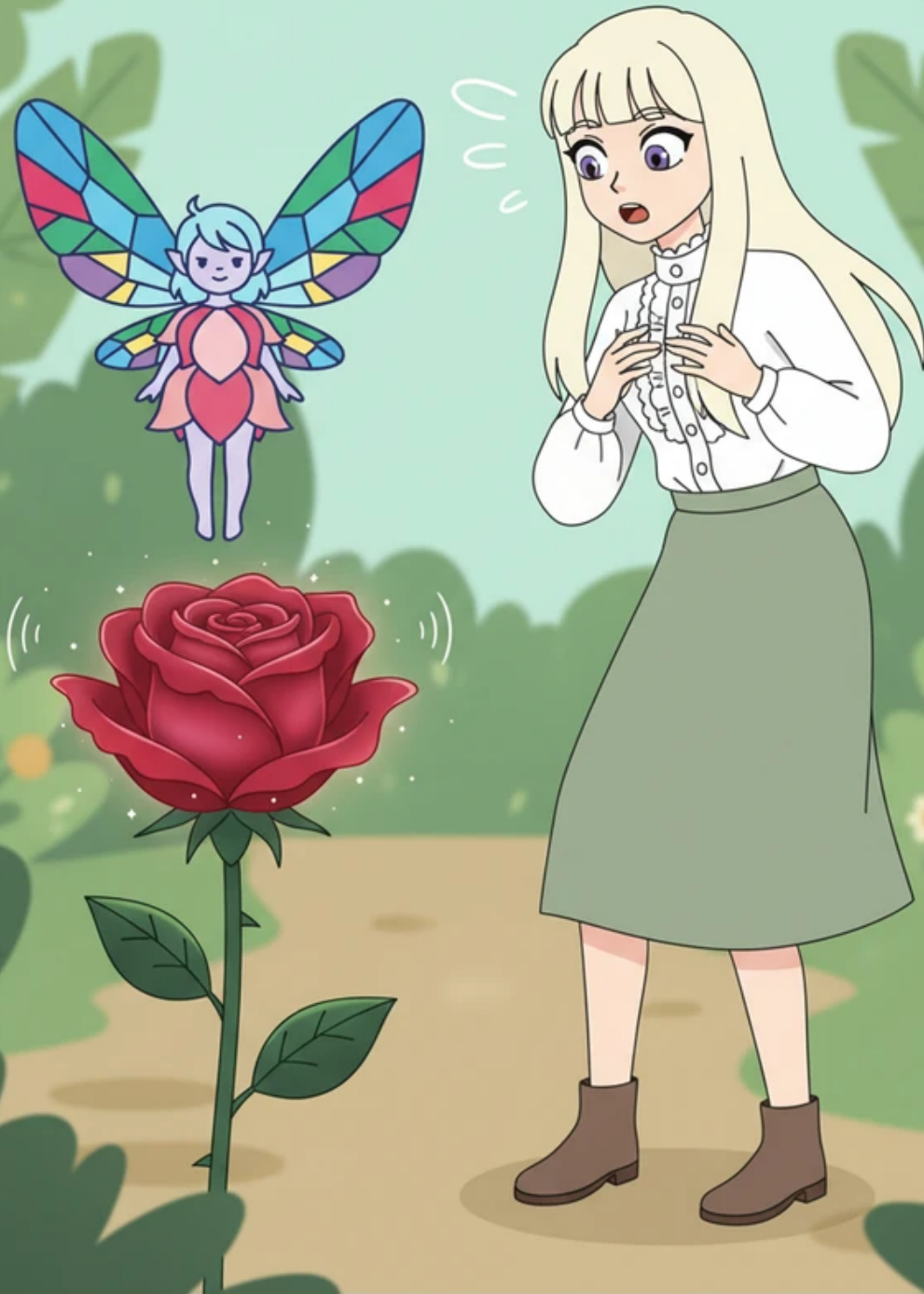


The Whispers of the Crimson Rose

Grade1 Bluebell



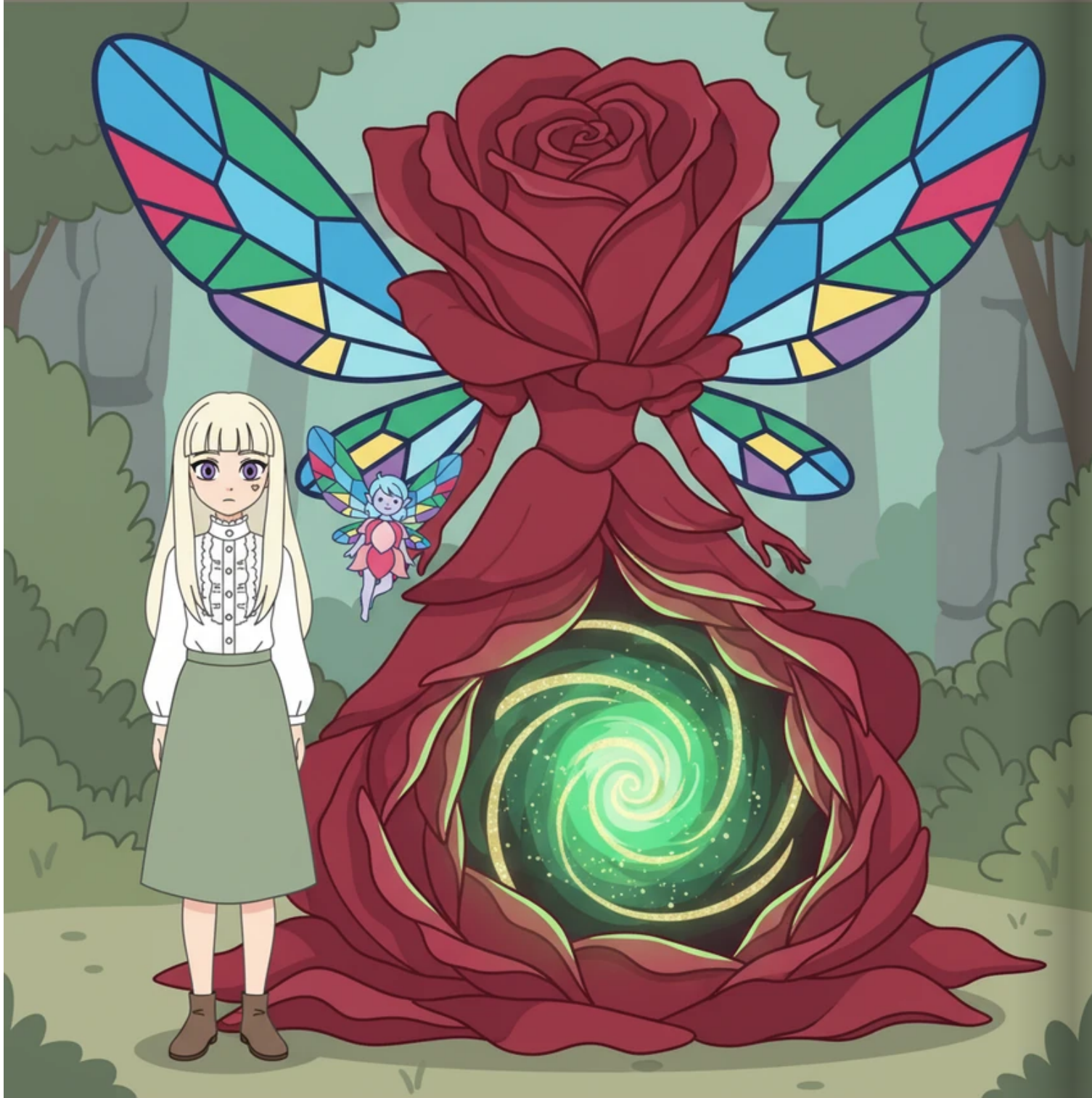
Lily wandered through her grandmother's overgrown garden, where the sunlight filtered through the ivy in golden patches. Among the wild daisies and tangled vines, she spotted a single, vibrant crimson rose that seemed to pulse with a soft, inner light.



As Lily leaned in to smell the flower, a tiny, melodic voice whispered her name, causing her to jump back in surprise. The rose's petals shimmered like silk as it introduced itself as Rosalind, the guardian of a forgotten realm.



Rosalind began to tell stories of Aetheria, a hidden world where the rivers flowed with liquid starlight and the trees hummed ancient songs. This magical land had been tucked away from human eyes for centuries, waiting for someone with a pure heart to find it.

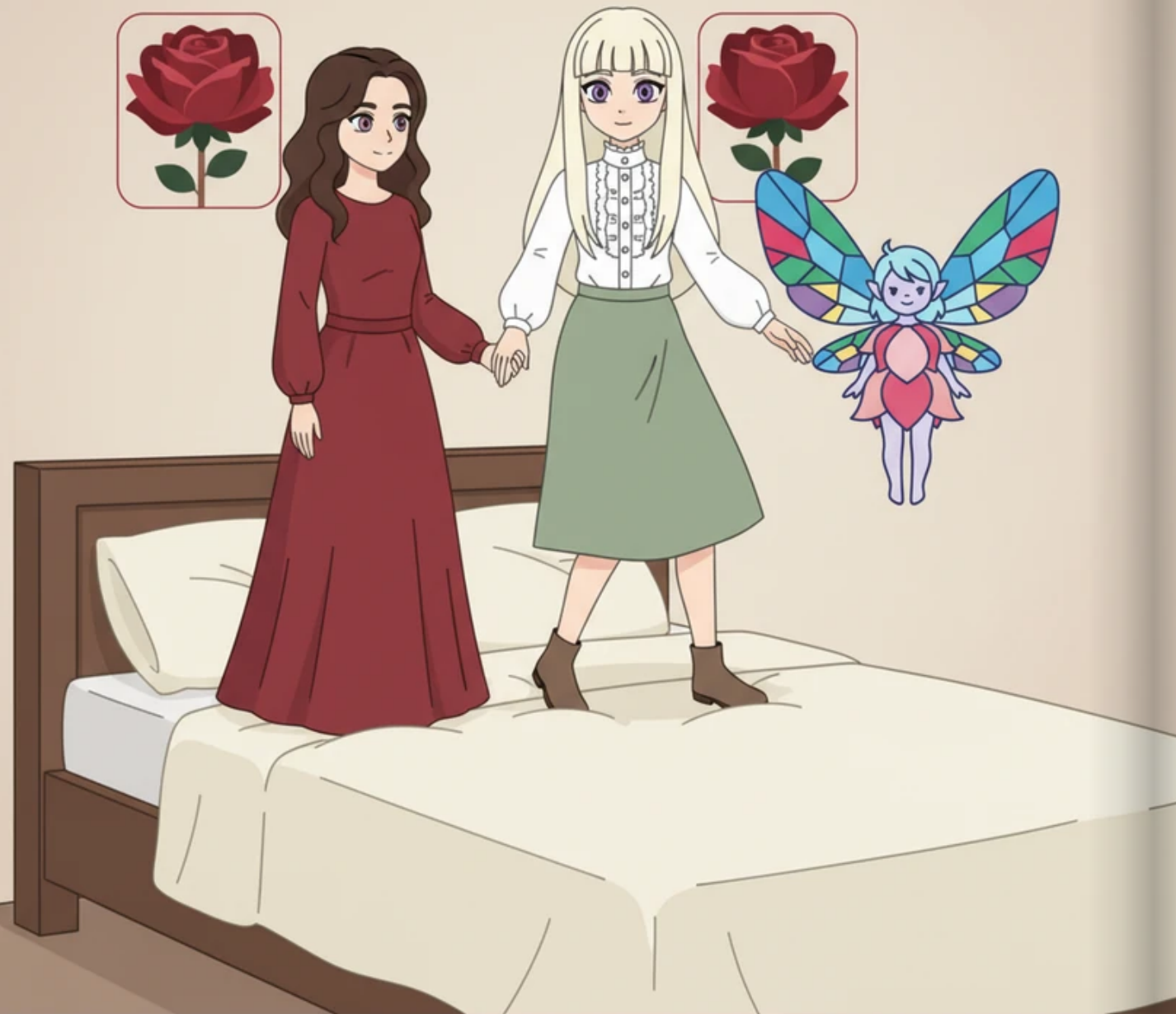


With a gentle sigh, the rose began to unfurl its petals wider than should be possible, revealing a swirling vortex of emerald and gold at its center. Rosalind explained that the garden was actually a gateway, and the magic was beginning to fade.



Taking a deep breath, Lily reached out her hand and felt herself shrinking until she was no taller than a blade of grass. She stepped into the heart of the rose, leaving the familiar garden behind as she tumbled into a world of impossible colors.

ROSALIND



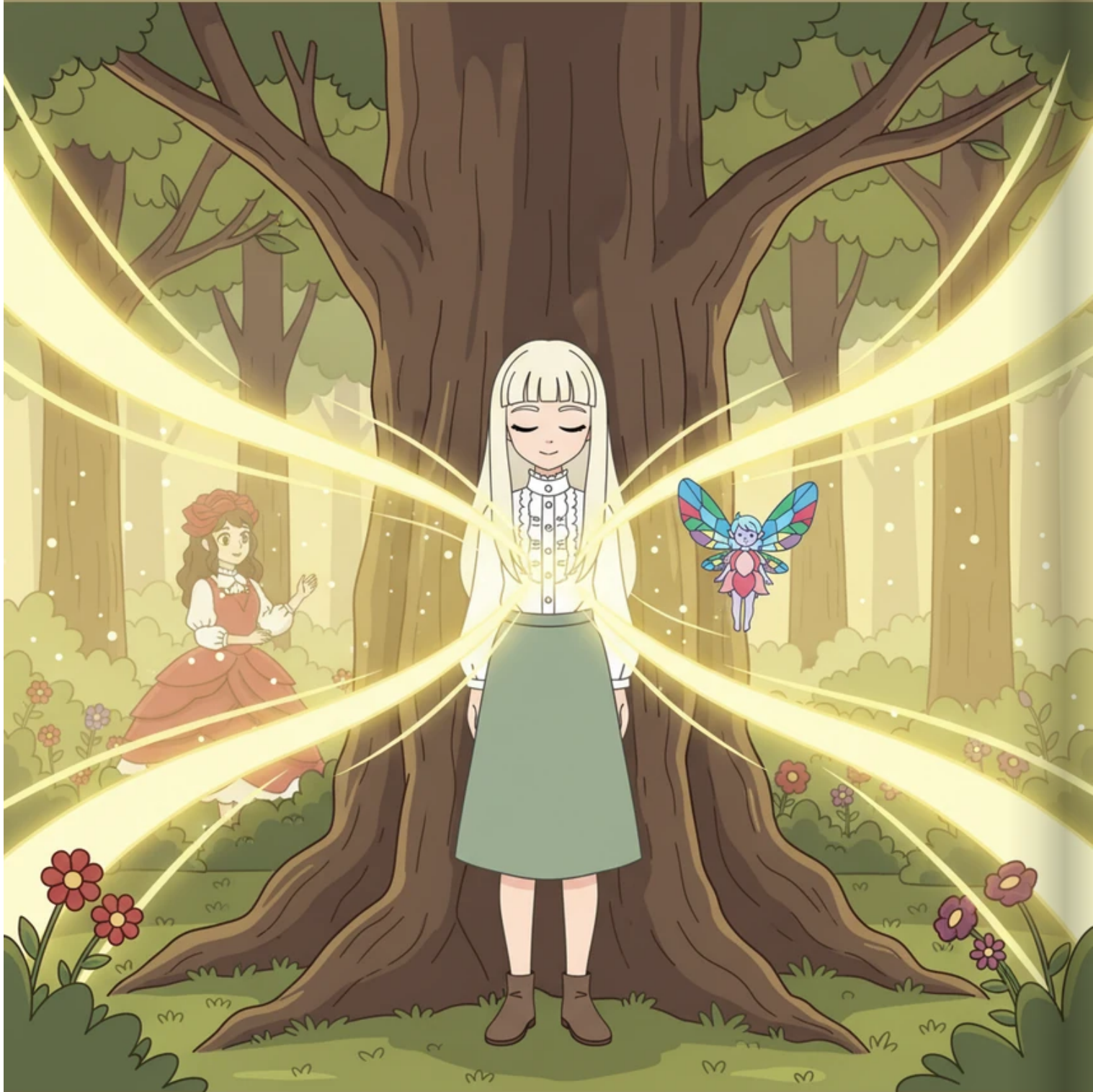
She landed softly on a bed of glowing moss in a forest where the flowers were as tall as houses and butterflies trailed sparkles behind them. The air smelled of honey and fresh rain, and the ground hummed with a gentle, rhythmic energy.



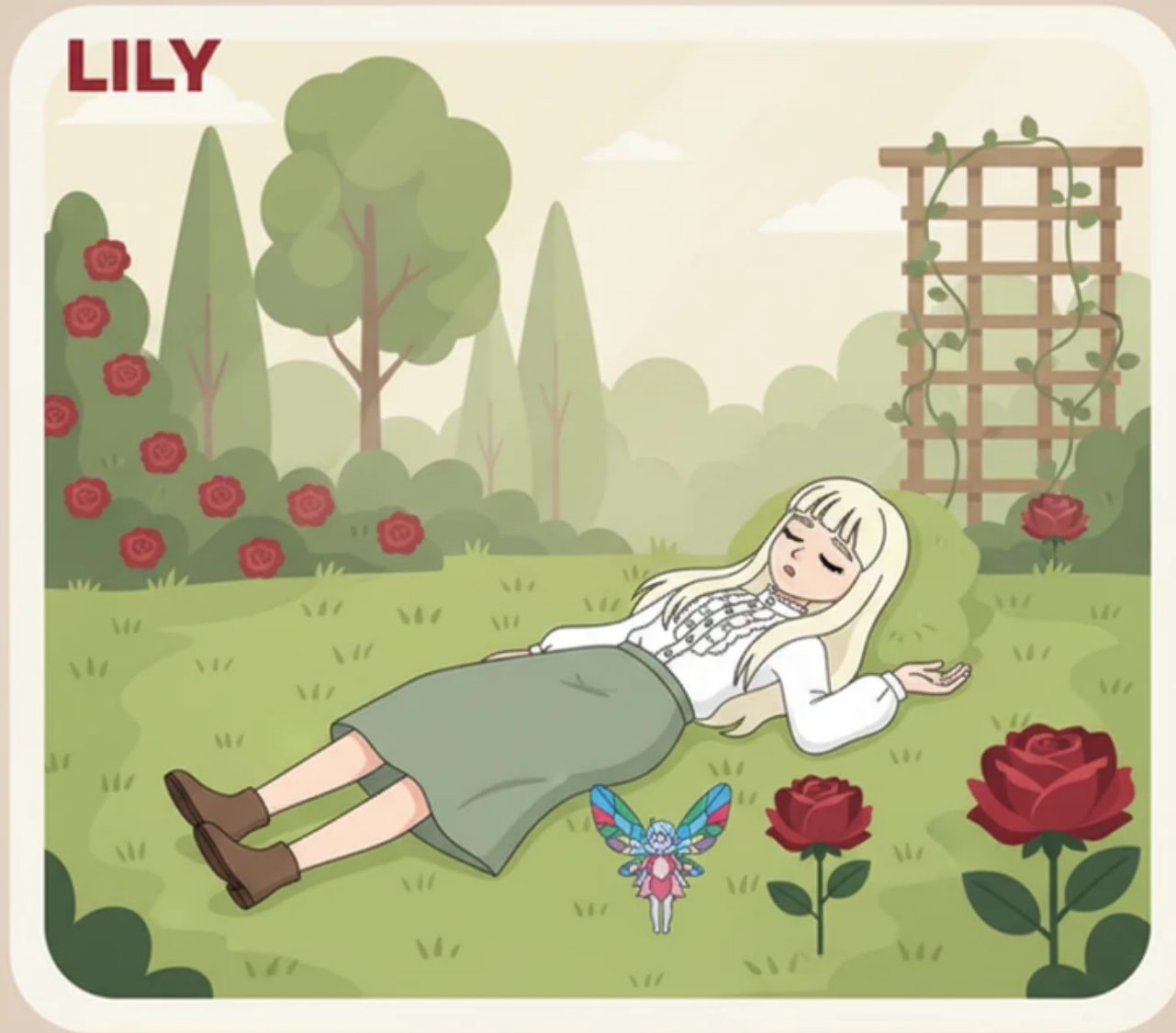
A small, winged sprite with wings like stained glass fluttered down to greet her, offering to be her guide through the enchanted woods. Together, they trekked toward the Great Willow, the source of all the magic in Aetheria.



When they reached the Great Willow, Lily saw that its leaves were turning gray and the light in its trunk was flickering out. The sprite explained that the world needed the wonder of a child to bloom once again and regain its lost strength.



Lily placed her hands on the rough bark of the tree and closed her eyes, thinking of all the beauty she had seen in her own garden. Her genuine love for nature flowed into the tree, causing a massive wave of golden light to erupt and restore the forest.



Lily woke up back in her grandmother's garden, sitting on the grass with the sun setting behind the trees. The crimson rose was still there, looking perfectly ordinary, but Lily knew that the magic was real and would always be blooming in her heart.