



The SigmaFi Translate Super-Solution

Darshan Ratnaparkhi



Professor Pixel, a friendly, sleek robot with a glowing electric blue core, stands proudly beside a bold, simplified logo for “SigmaFi Translate.” Digital neural flow lines in blue and white radiate from the logo across a charcoal background, suggesting connectivity and intelligence. The scene is clean and authoritative, yet playful, introducing a smart new way to handle special translations with wonder and clarity.



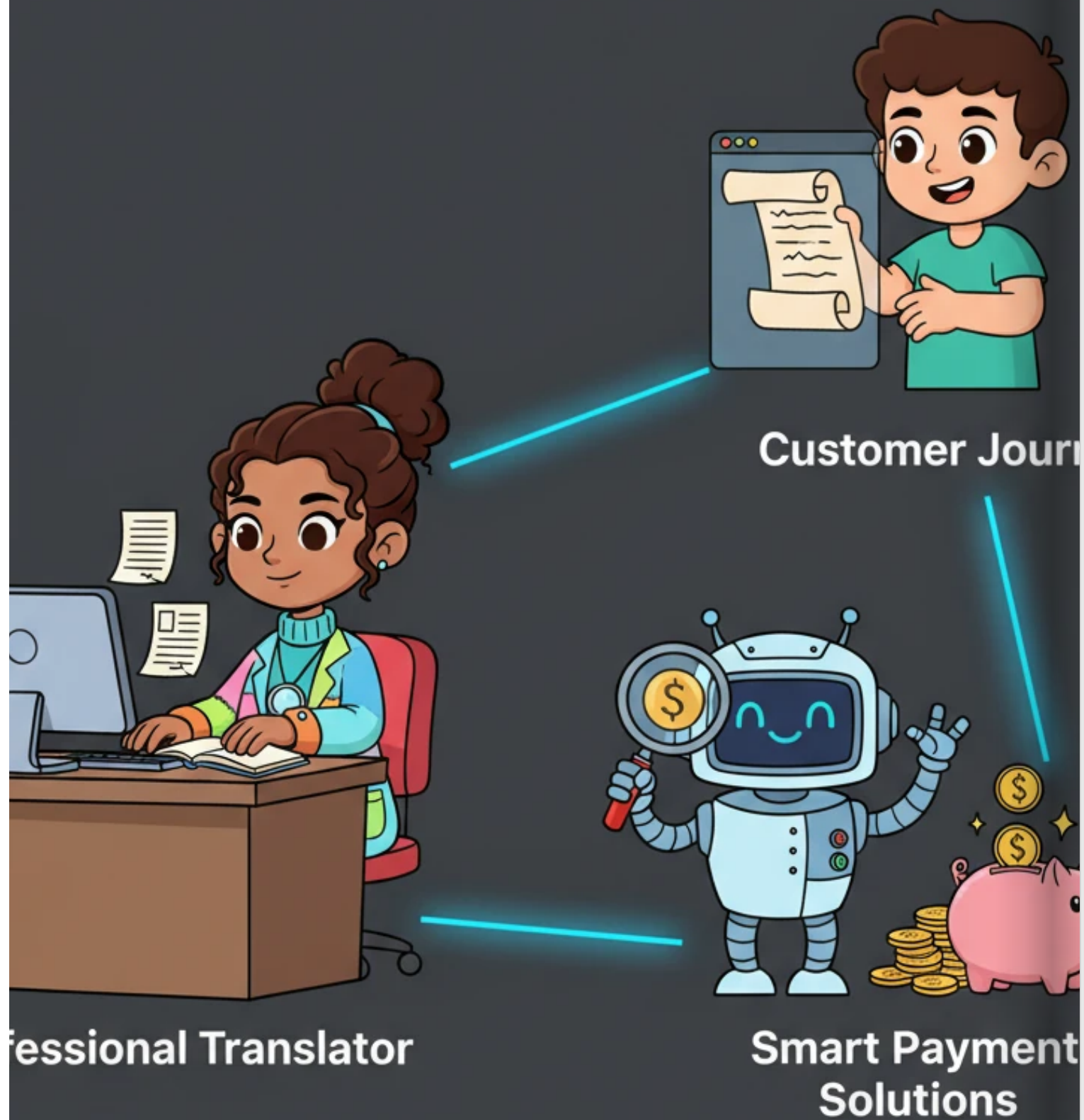
A cartoon human translator, looking slightly overwhelmed, sits at a desk piled high with papers and complex-looking foreign documents. Their computer screen shows jumbled text. A slow, clunky conveyor belt with a “CAT-tool workflow” label moves sluggishly, contrasting with a sleek, empty lane labeled “AI pipeline,” highlighting that traditional translation methods are slow and can't keep up with big demands.



Professor Pixel stands on a cartoon globe, pointing to various glowing cities connected by bright, flowing lines representing global communication and regulations. Small thought bubbles above the cities show symbols for different languages and legal documents. The background is a calm, structured grid, showing that the world needs fast, accurate translation more than ever, and AI is ready to help.



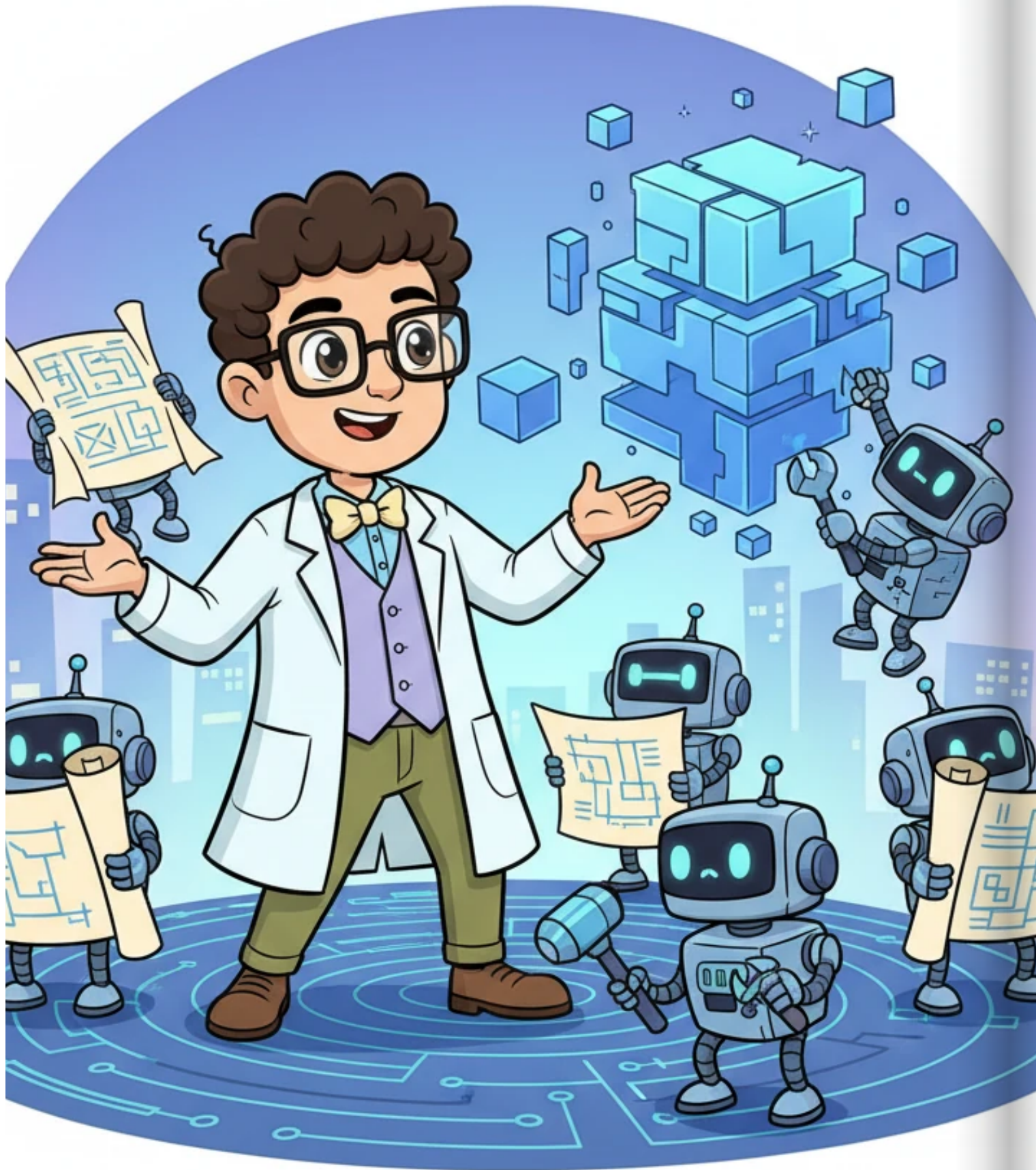
Professor Pixel stands confidently, holding a glowing lightbulb that projects four clear, simple icons: a stopwatch for speed, a magnifying glass for precision, a handshake for trust, and a shield for compliance. The background is a clean, minimalist space, emphasizing the clarity of the vision. SigmaFi Translate offers speed, precision, trust, and compliance for every translation.



A playful, modular diagram shows three interconnected cartoon elements: a diligent “Professional Translator” character, a clever “Smart Payment Solutions” robot happily counting coins, and a cheerful “Customer Journey” character receiving a perfectly translated document. Electric blue lines connect these modules on a dark gray background. SigmaFi connects expert translators, smart payments, and happy customers seamlessly, making the solution elegant and efficient.



A split screen shows a 'before' side with the overwhelmed translator from Scene 2, looking tired, and an 'after' side with the same translator smiling, documents neatly stacked, and a lightning bolt symbol for speed. A cheerful customer character gives a thumbs-up. SigmaFi makes translation faster, more accurate, and brings in more happy customers, showcasing tangible, positive impact.



Professor Pixel is seen directing a team of small, busy worker robots, some holding blueprints labeled “PM2” for structured planning and others using tools to build a digital structure with “Scrum” labels for agile development. The scene emphasizes teamwork and structured progress, building SigmaFi with careful planning and smart, iterative development.



Professor Pixel stands in front of three glowing protective shields labeled “AI Talent,” “Data Privacy,” and “Legal Compliance.” Friendly cartoon security guards (robots) are shown diligently monitoring data flows. The overall mood is one of safety and vigilance, as we carefully manage risks like data privacy and legal rules to keep everything secure.



A diverse group of smiling cartoon characters (translators, project managers, tech experts) work together in a bright, modern digital workspace, collaborating seamlessly. Professor Pixel oversees them, beaming. Digital lines connect them, symbolizing efficient communication and new roles. SigmaFi brings people, technology, and good governance together for lasting success.



Professor Pixel stands on a hill, looking out at a horizon where a stylized “SigmaFi Translate” logo glows brightly over a futuristic city. The sun rises, casting electric blue and white light. The message “This is not automation. This is transformation.” appears as a subtle, powerful thought bubble above Professor Pixel, leaving a lasting impression of visionary leadership and profound impact.