



# The Adventures of Arlo the Algorithm Architect

Praveen Yaragatti





Arlo, a bright-eyed young inventor, stared at a blank screen, eager to build his first workflow. He imagined a world where ideas flowed like water, guided by his creations.

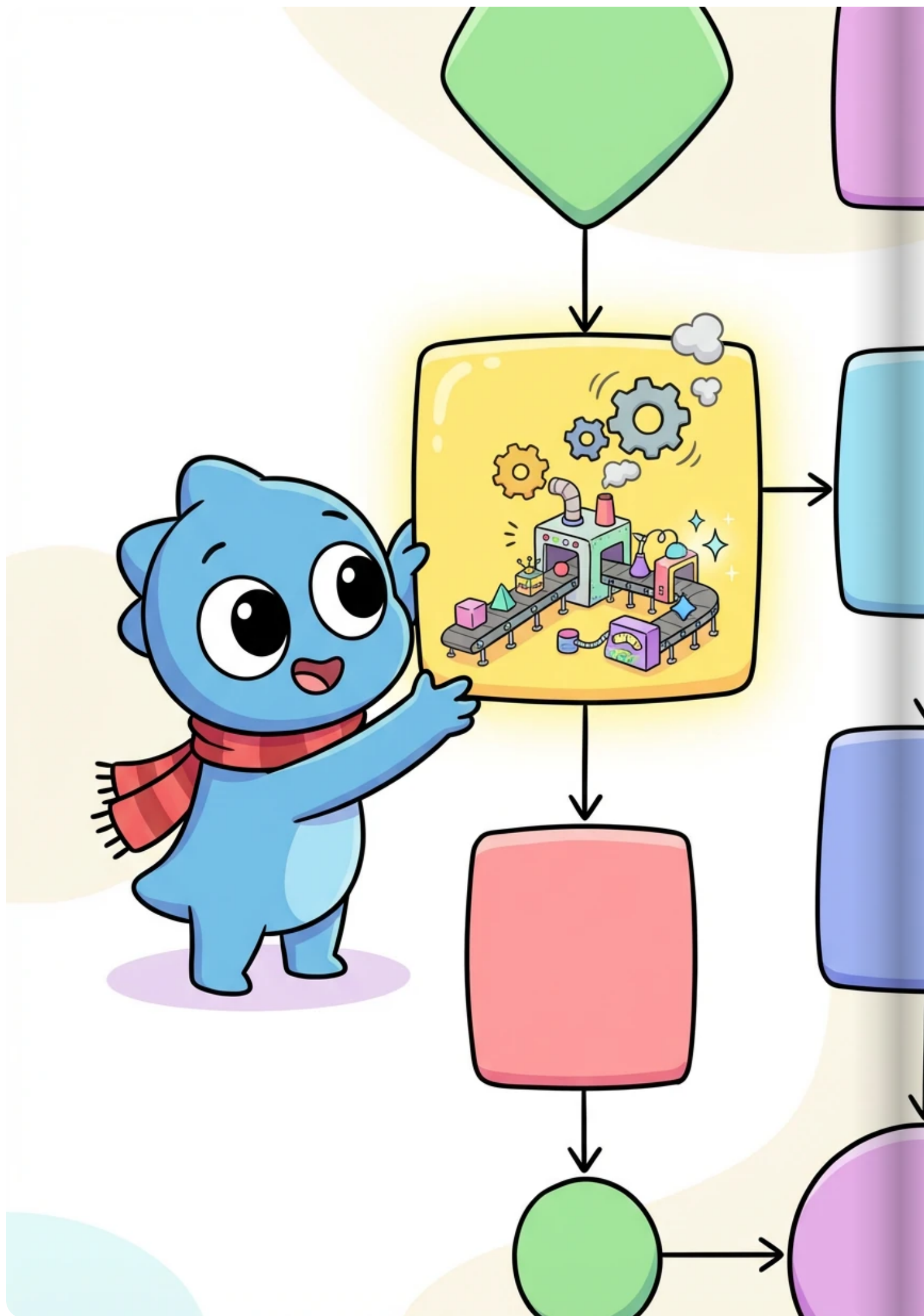


With a click, Arlo created a new workflow. The canvas shimmered, ready to receive his brilliant designs. He grinned, his fingers itching to start.



From the sidebar, Arlo dragged a 'Start' node onto the canvas. It was a vibrant green, pulsing with potential. This was the beginning of his adventure!





Next, he added a 'Process' node, a cheerful yellow square. Arlo imagined it as a tiny factory, transforming ideas into something new and exciting.



He carefully connected the 'Start' node to the 'Process' node, a blue line zipping between them. Energy flowed, linking the beginning to the action.



Arlo double-clicked the 'Process' node to edit its properties. A window popped up, allowing him to define exactly what this node would do. He typed in 'Sparkle Generator'.





He added a 'Decision' node, a clever purple diamond. This node would decide which path the workflow would take, adding a touch of strategy to his design.





Accidentally, Arlo dragged an extra node onto the canvas! He quickly selected it and pressed the delete key. Poof! It was gone, no problem at all.



He made a small mistake connecting the nodes. 'Oops!' he thought, and clicked 'Undo'. The connection vanished, allowing him to try again. 'Redo!' he said, restoring the correct line.





Arlo plins to complete the workflow diagram,  
thoelonstep grant in paint.

Finally, Arlo added an 'End' node, a radiant orange circle. The workflow was complete! He beamed with pride, ready to unleash his creation upon the world.