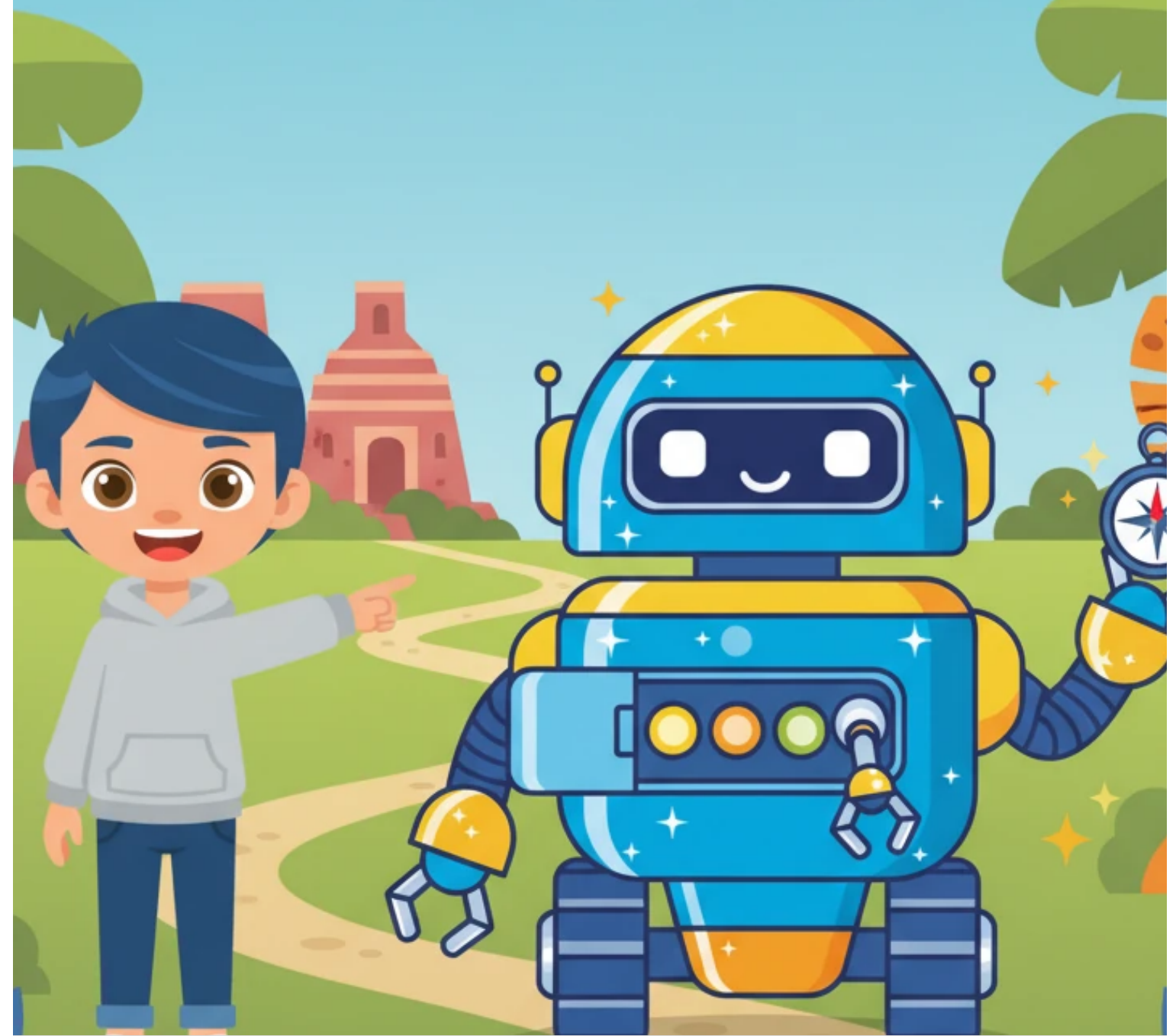


LIAM AND THE LOST BO

A JUNGLE ADVENTURE



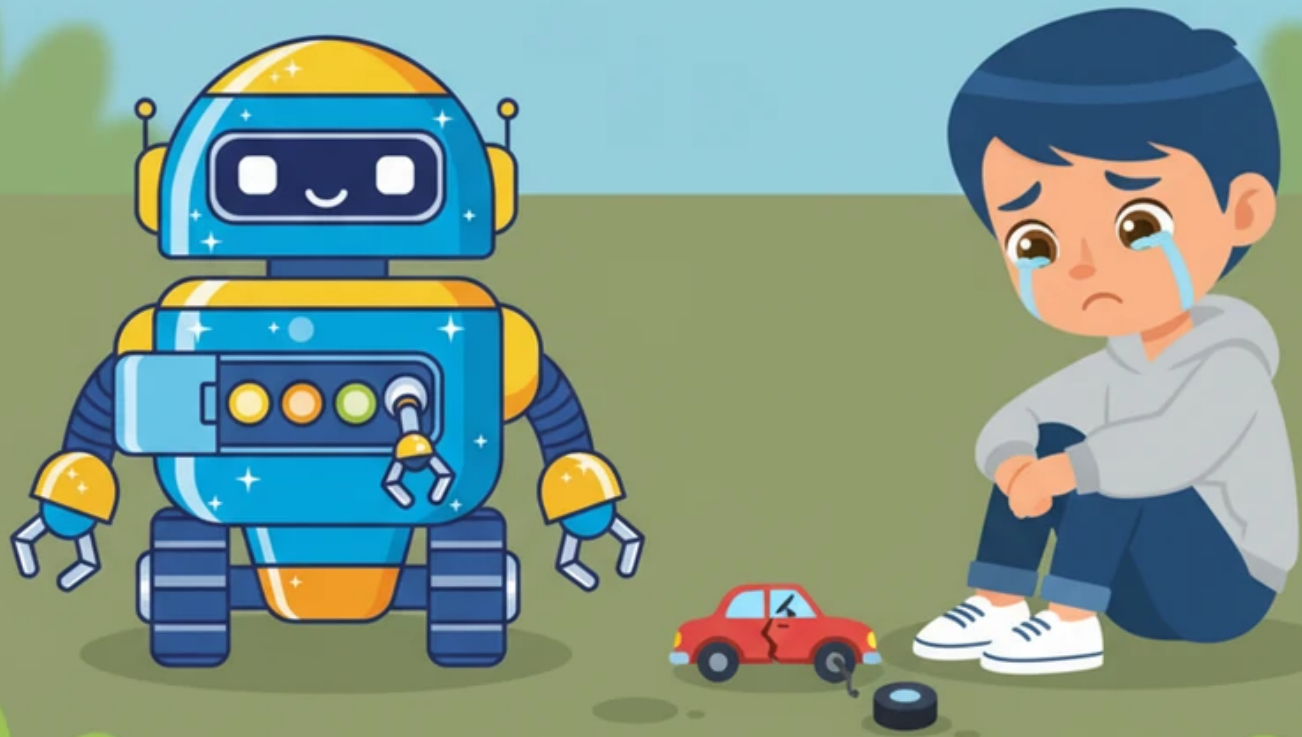
Pip the Robot's Big Day

Muhammed Adeel

LIAM - THE EXPLORER



Pip is a bright, colorful robot who loves spending his mornings in the sun-drenched city park. His metallic body sparkles in the light as he rolls along the paved paths, greeting everyone with a friendly beep.



Near a patch of bright green grass, Pip notices a young boy looking very sad. On the ground lies a small red toy car with a broken axle and a missing wheel.



A Broken Friend

Pip rolls over to the boy and tilts his head curiously, his digital eyes blinking with concern. He gently scans the toy car with a soft blue light to see exactly what is wrong.

PIP & THE FLOATING FRIEND



With a cheerful chime, a small hatch on Pip's chest slides open to reveal a hidden toolkit. Inside, there are dozens of tiny, glowing parts and tools perfect for any repair.



PIP - THE ROBOT MECHANIC

Pip carefully selects a brand-new silver wheel that matches the toy car perfectly. He extends a small, precise robotic arm to snap the wheel into place with a satisfying click.



To make the repair extra special, Pip uses a tiny soft cloth to polish the red paint of the car. The toy now looks even better than it did when it was brand new.



LIAM AND PIP - THE ADVENTURE BEGINS

The boy smiles widely and pushes the car, watching it zoom across the grass faster than ever before. Pip follows along, his internal gears whirring with happiness as they play together.



Soon, other children see Pip's kindness and bring him a leaky bubble wand to fix. Pip uses a small laser to seal the crack, and soon the air is filled with shimmering, floating bubbles.



As the sun begins to set, the sky turns a beautiful shade of orange and pink behind the trees. Pip looks around the park and sees many happy faces, all thanks to a little bit of help.



Pip waves a mechanical hand goodbye to his new friends as he heads home for a recharge. He knows that being a digital helper is the best job in the whole world.