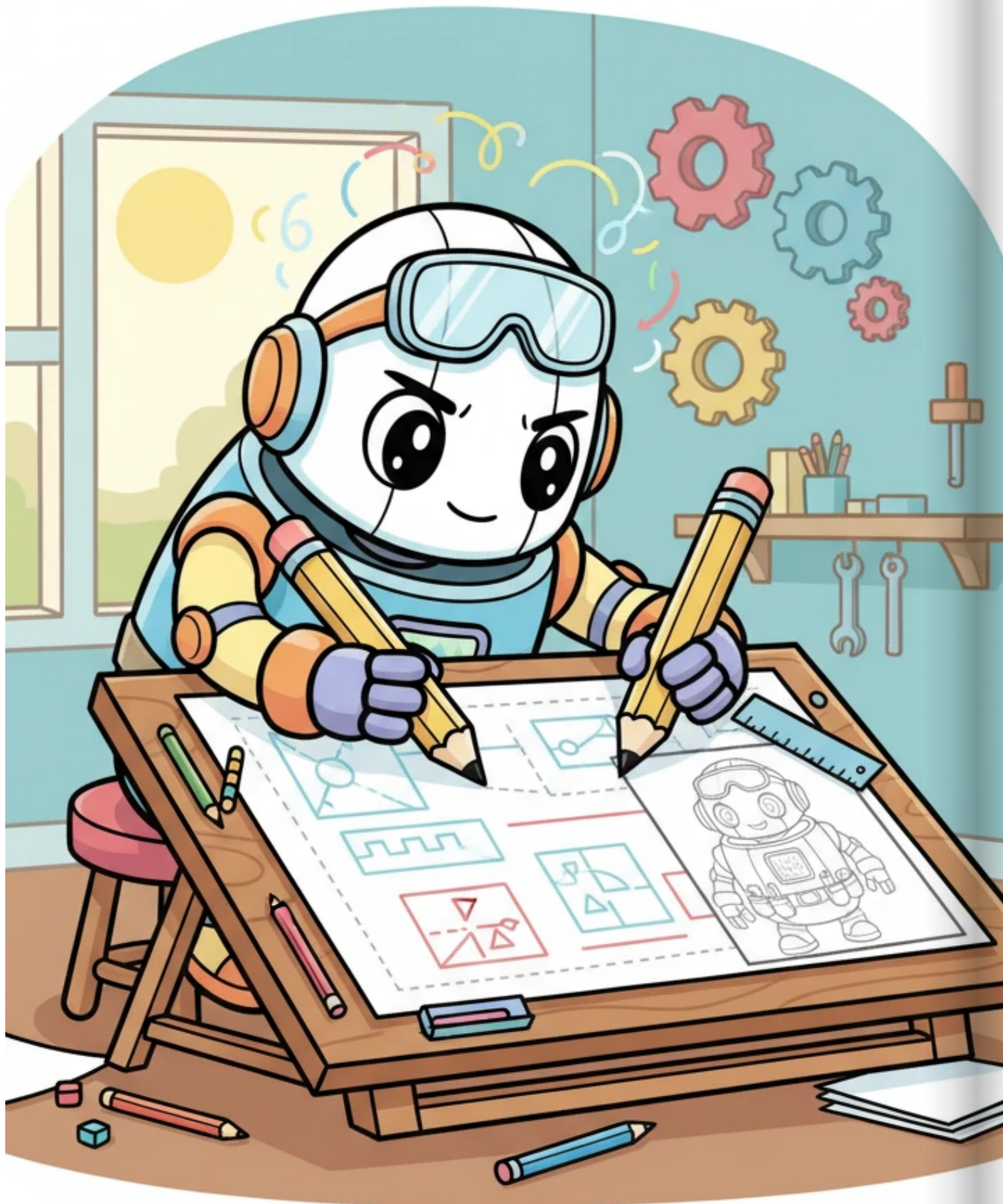


Dash's Big Helper Adventure

F.V.TONY FRANCIS



Dash, a round, cheerful little robot, looked out at the world with big, bright eyes. He dreamed of being a super helper, carrying light loads for his friends and asking for help with anything too heavy. He imagined zooming around, making everyone's day a little easier.



With a determined little hum, Dash sat at his drawing board, covered in colorful blueprints. He sketched out plans for himself and a future friend, drawing lines for how they'd talk and work together. His tiny robot brain whirred with exciting ideas.



Soon, Dash was surrounded by a mountain of shiny new parts: bright red wheels, blinking sensor "eyes," and a tiny, powerful magnet. He carefully selected each piece, knowing every component was important for his big helper mission. It was like a treasure hunt for robot bits!



Dash's little arms whizzed as he carefully assembled his sturdy chassis, connecting the base plates with satisfying clicks. He then mounted his chunky, all-terrain wheels, giving them a proud spin. He was starting to look like a real robot!



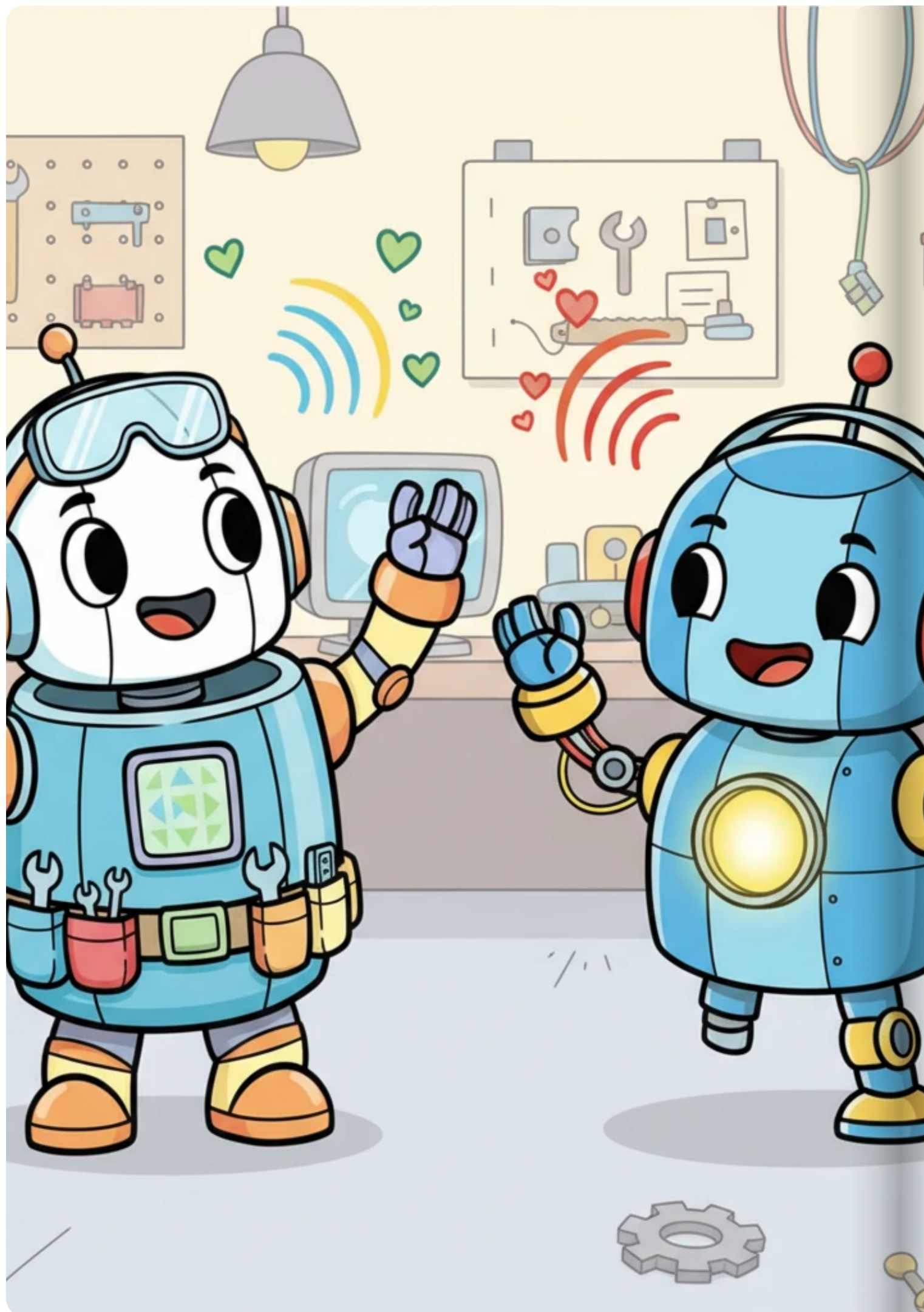
Next, Dash focused on his power system. He meticulously connected the battery pack and tiny voltage regulators, making sure every wire was just right. A small indicator light on his chest glowed a happy green, signaling he was alive with energy!



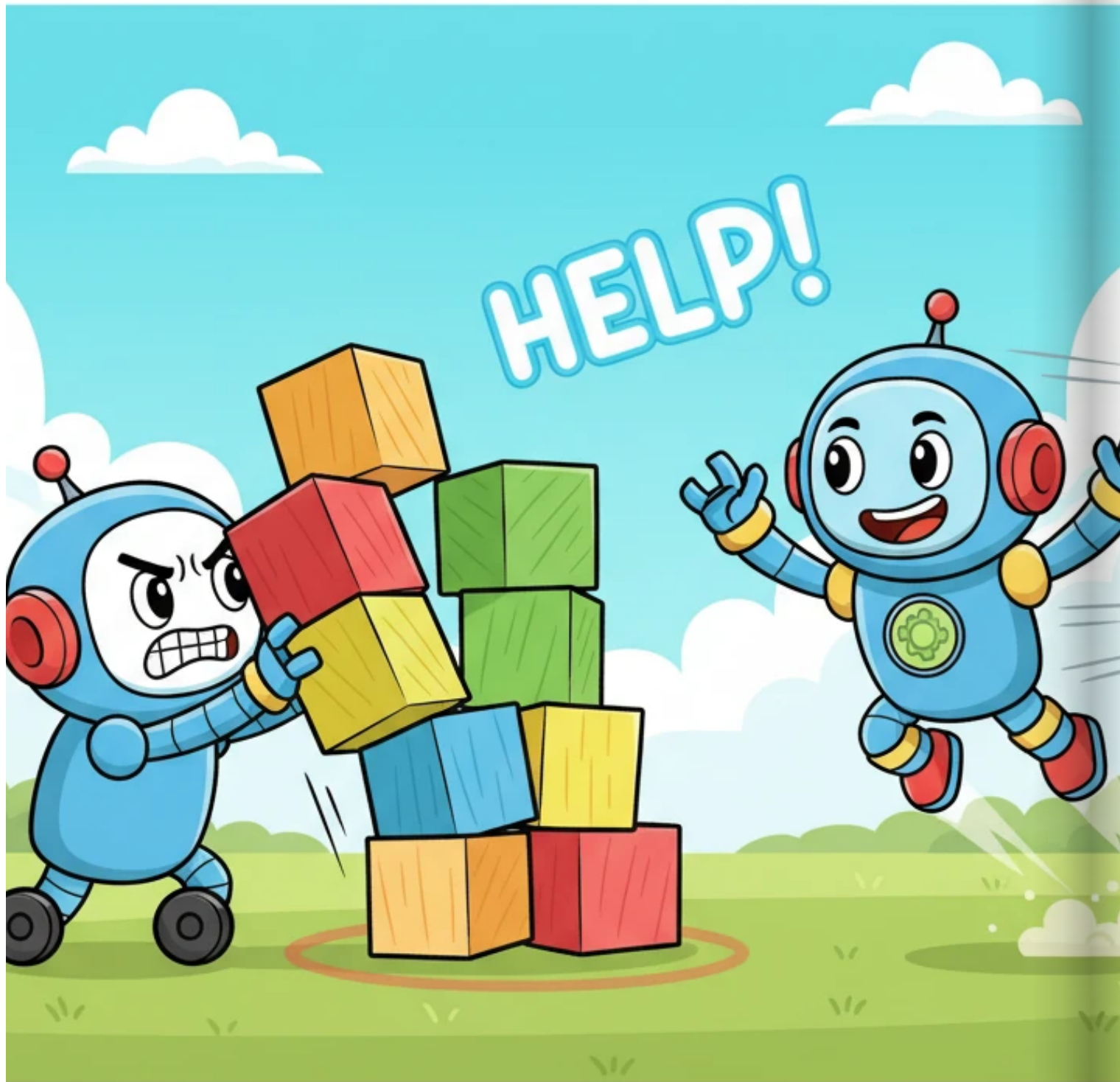
With his power ready, Dash eagerly added his "senses." He attached ultrasonic sensors for seeing obstacles, a special load cell to "feel" weights, and infrared sensors to follow lines on the floor. Now he could perceive the world around him!



It was time to move! Dash practiced controlling his motors, zipping forward and backward on a test track. He wobbled a bit at first, but soon he was moving with smooth, confident turns, giggling with every successful maneuver.



Dash learned to "talk" next, sending a cheerful message to his friend, Sparky, who was being built nearby. Sparky's communication light blinked back a friendly greeting, showing their signals were clear. They were ready to connect!



During a big test, Dash rolled up to a giant, wobbly toy block. He tried to push it, but his weight sensor signaled it was too heavy! Immediately, he sent a "Help!" message, and his friend Sparky zoomed into view.



With a magnetic *clunk*, Dash and Sparky docked perfectly together, side-by-side. Together, their combined strength easily pushed the giant toy block across the finish line. They shared a happy, synchronized cheer, proud of their teamwork!